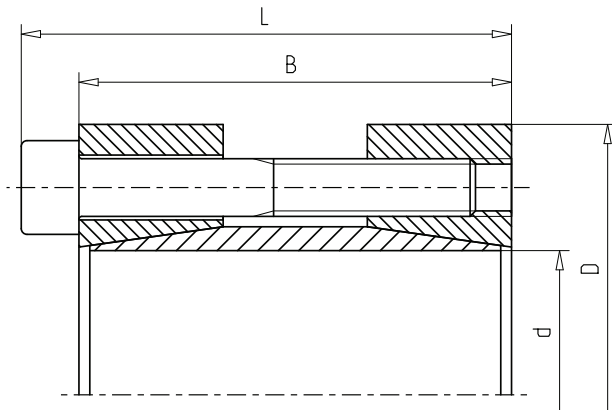


WALTHER FLENDER CLAMPING SETS - MLC 9000



Characteristics

Material*	Steel C45
Self-centring	-
Taper angle	not self-locking
Loosening	automatic

*Further materials and surface treatments are available on request

Available sizes & Technical data

Size			Dimensions		Screws		Torque	Axial forces
	d x D (mm)		B (mm)	L (mm)	M	M _S (Nm)	M _t (Nm)	F _{AX} (kN)
10	x 35		38	42	M 4	5,5	62	12
11	x 35		38	42	M 4	5,5	66	12
12	x 35		38	42	M 4	5,5	72	12
14	x 35		38	42	M 4	5	76	11
15	x 45		50	56	M 6	17	160	23
16	x 45		50	56	M 6	17	170	23
17	x 45		50	56	M 6	17	180	23
18	x 50		50	56	M 6	17	190	23
19	x 50		50	56	M 6	17	200	23
20	x 50		50	56	M 6	17	220	23
22	x 55		60	66	M 6	17	360	33
24	x 55		60	66	M 6	17	390	33
25	x 55		60	66	M 6	17	400	33
28	x 60		60	66	M 6	17	390	29
30	x 60		60	66	M 6	17	420	29
32	x 75		75	83	M 8	41	610	39
35	x 75		75	83	M 8	41	670	39
38	x 75		75	83	M 8	41	730	39
40	x 75		75	83	M 8	41	760	39
42	x 85		85	93	M 8	41	1.170	57
45	x 85		85	93	M 8	41	1.260	57
50	x 90		85	93	M 8	41	1.400	57
55	x 95		85	93	M 8	41	2.000	76
60	x 100		85	93	M 8	41	2.260	76
65	x 105		85	93	M 8	41	2.500	77
70	x 115		100	110	M 10	83	3.300	95
75	x 120		100	110	M 10	83	3.500	95
80	x 125		100	110	M 10	75	3.900	100
90	x 136		100	110	M 10	75	5.100	113
100	x 158		120	132	M 12	130	8.350	167

Recommended shaft/hub fitting tolerances h8/ -