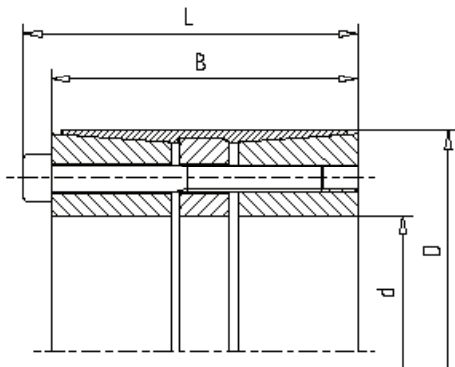


WALTHER FLENDER CLAMPING SETS - MLC 7000



Characteristics

Material*	Steel C45
Self-centring	yes
Taper angle	self-locking
Loosening	Forcing screws

*Further materials and surface treatments are available on request

Available sizes & Technical data

Size		Dimensions		Screws		Torque	Axial forces	Surface pressure
d x D (mm)		B (mm)	L (mm)	M	M _S (Nm)	M _t (Nm)	F _{AX} (kN)	p _N (N/mm ²)
25	x 50	45	51	M 6	17	730	60	92
28	x 55	45	51	M 6	17	1.100	80	112
30	x 55	45	51	M 6	17	1.180	80	112
32	x 60	45	51	M 6	17	1.180	80	112
35	x 60	45	51	M 6	17	1.390	80	100
38	x 65	45	51	M 6	17	1.880	100	115
40	x 65	45	51	M 6	17	1.980	100	115
42	x 75	45	51	M 8	41	3.000	145	145
45	x 75	45	51	M 8	41	3.250	145	145
48	x 80	62	70	M 8	41	3.450	145	95
50	x 80	62	70	M 8	41	3.600	145	95
55	x 85	62	70	M 8	41	3.950	145	90
60	x 90	62	70	M 8	41	5.400	180	107
65	x 95	62	70	M 8	41	5.850	180	100
70	x 110	76	86	M 10	83	10.200	290	115
75	x 115	76	86	M 10	83	10.950	290	110
80	x 120	76	86	M 10	83	14.000	350	128
85	x 125	76	86	M 10	83	15.000	350	123
90	x 130	76	86	M 10	83	15.800	350	118
95	x 135	76	86	M 10	83	16.800	350	115
100	x 145	98	110	M 12	145	26.000	520	120
110	x 155	98	110	M 12	145	28.600	520	110
120	x 165	98	110	M 12	145	36.300	605	122
130	x 180	114	128	M 14	230	46.000	710	112
140	x 190	114	128	M 14	230	57.800	825	123
150	x 200	114	128	M 14	230	70.800	945	135
160	x 210	114	128	M 14	230	75.500	945	128
170	x 225	146	162	M 16	355	95.900	1.130	113
180	x 235	146	162	M 16	355	108.800	1.210	115
190	x 250	146	162	M 16	355	122.500	1.290	115
200	x 260	146	162	M 16	355	128.900	1.290	110
220	x 285	146	162	M 16	355	171.800	1.565	115
240	x 305	146	162	M 16	355	208.000	1.735	120
260	x 325	150	166	M 16	355	237.000	1.825	117
280	x 355	177	197	M 20	690	340.000	2.430	120
300	x 375	177	197	M 20	690	405.000	2.700	125

Recommended shaft/hub fitting tolerances h8/H8