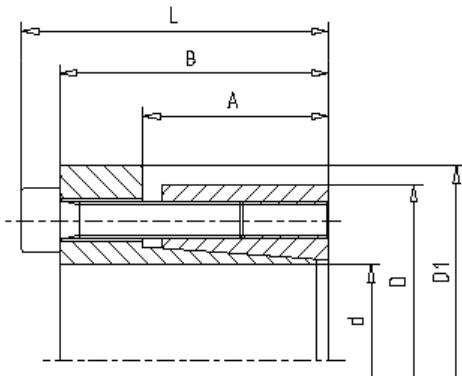


WALTHER FLENDER CLAMPING SETS - MLC 5007



Characteristics

Material*	Steel C45
Self-centring	yes
Taper angle	self-locking
Loosening	Forcing screws

*Further materials and surface treatments are available on request

Available sizes & Technical data

Size		Dimensions				Screws		Torque	Axial forces	Surface pressure	
d x D (mm)		D ₁ (mm)	A (mm)	B (mm)	L (mm)	M	M _s (Nm)	M _t (Nm)	F _{ax} (kN)	p _N (N/mm ²)	
18	x	47	53	28	22	34	M 6	17	290	32	100
19	x	47	53	28	22	34	M 6	17	300	32	100
20	x	47	53	28	22	34	M 6	17	320	32	100
22	x	47	53	28	22	34	M 6	17	350	32	100
24	x	50	56	28	22	34	M 6	17	390	32	100
25	x	50	56	28	22	34	M 6	17	400	32	100
28	x	55	61,4	28	22	34	M 6	17	450	32	90
30	x	55	61,4	28	22	34	M 6	17	490	32	90
32	x	60	67	28	22	34	M 6	17	700	43	110
35	x	60	67	28	22	34	M 6	17	760	43	110
38	x	65	72	28	22	34	M 6	17	820	43	100
40	x	65	72	28	22	34	M 6	17	870	43	100
42	x	75	84	33	25	41	M 8	41	1.700	80	140
45	x	75	84	33	25	41	M 8	41	1.800	80	140
48	x	80	89	33,5	24	41	M 8	41	1.900	80	130
50	x	80	89	33,5	24	41	M 8	41	2.000	80	130
55	x	85	94	33,5	24	41	M 8	41	2.200	80	120
60	x	90	99	33,5	24	41	M 8	41	2.400	80	120
65	x	95	104	33,5	24	41	M 8	41	2.600	80	110
70	x	110	119	40	29	50	M 10	83	4.600	130	130
75	x	115	124	40	29	50	M 10	83	5.000	130	130
80	x	120	129	40	29	50	M 10	83	5.300	130	120
85	x	125	134	40	29	50	M 10	83	7.000	160	150
90	x	130	139	40	29	50	M 10	83	7.400	160	140
95	x	135	144	40	29	50	M 10	83	7.800	160	130
100	x	145	154	44	31	56	M 12	145	9.700	200	140
110	x	155	164	44	31	56	M 12	145	10.700	200	130
120	x	165	174	44	31	56	M 12	145	13.100	220	150
130	x	180	189	52	39	64	M 12	145	19.000	290	130
140	x	190	199	54	39	68	M 14	230	20.500	300	140
150	x	200	209	54	39	68	M 14	230	24.500	330	130
160	x	210	219	54	39	68	M 14	230	31.300	390	150
180	x	235	244	64	49	78	M 14	230	35.000	390	110
200	x	260	269	64	49	78	M 14	230	49.000	500	110

Recommended shaft/hub fitting tolerances h8/H8