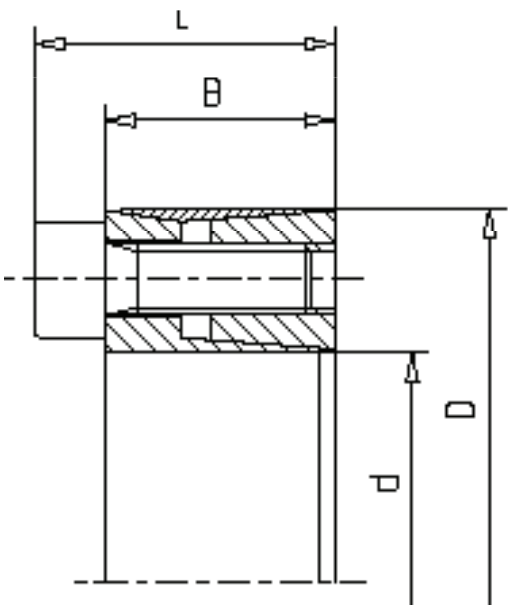


WALTHER FLENDER CLAMPING SETS - MLC 1010



Characteristics

Material*	Steel C45
Self-centring	no
Taper angle	self-locking
Loosening	Forcing screws

*Further materials and surface treatments are available on request

Available sizes & Technical data

Size		Dimensions		Screws		Torque	Axial forces	Surface pressure
d x D (mm)		B (mm)	L (mm)	M	M _S (Nm)	M _t (Nm)	F _{AX} (kN)	P _N (N/mm ²)
16	x 32	17	21	M 4	5	80	13	68
18	x 40	18	24	M 6	17	180	24	100
19	x 41	18	24	M 6	17	190	24	100
20	x 42	18	24	M 6	17	200	24	100
22	x 44	18	24	M 6	17	220	24	90
24	x 46	18	24	M 6	17	360	36	130
25	x 47	18	24	M 6	17	380	36	130
28	x 50	18	24	M 6	17	420	36	120
30	x 52	18	24	M 6	17	450	36	120
32	x 54	18	24	M 6	17	480	36	110
35	x 57	22	28	M 6	17	700	36	90
38	x 60	22	28	M 6	17	750	36	85
40	x 62	22	28	M 6	17	800	36	80
42	x 70	28	36	M 8	41	1.500	90	135
45	x 73	28	36	M 8	41	1.700	90	130
50	x 78	28	36	M 8	41	1.840	90	120
55	x 83	28	36	M 8	41	2.000	90	130
60	x 88	28	36	M 8	41	2.200	90	100
65	x 93	28	36	M 8	41	2.400	110	110
70	x 105	35	45	M 10	80	4.100	150	125
75	x 110	35	45	M 10	80	4.400	150	120
80	x 115	35	45	M 10	80	4.700	150	115
90	x 125	35	45	M 10	80	5.800	180	120

Recommended shaft/hub fitting tolerances h8/H8