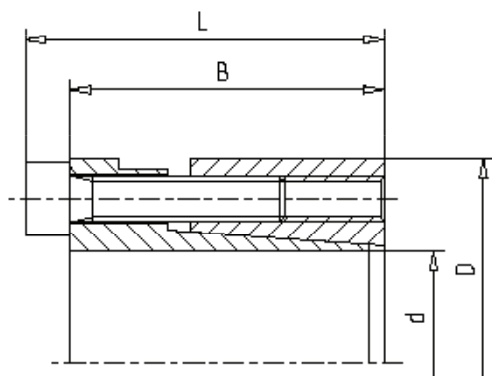


## WALTHER FLENDER CLAMPING SETS - MLC 5000 A



### Characteristics

Material*	Steel C45
Self-centring	yes
Taper angle	self-locking
Loosening	Forcing screws

\*Further materials and surface treatments are available on request

### Available sizes & Technical data

Size			Dimensions		Screws		Torque	Axial forces	Surface pressure
d x D (mm)			B (mm)	L (mm)	M	M <sub>S</sub> (Nm)	M <sub>t</sub> (Nm)	F <sub>AX</sub> (kN)	p <sub>N</sub> (N/mm <sup>2</sup> )
20	x	47	42	48	M 6	17	530	52	110
22	x	47	42	48	M 6	17	580	52	110
24	x	50	42	48	M 6	17	630	52	100
25	x	50	42	48	M 6	17	660	52	100
28	x	55	42	48	M 6	17	740	52	100
30	x	55	42	48	M 6	17	790	52	100
32	x	60	42	48	M 6	17	1.150	70	120
35	x	60	42	48	M 6	17	1.300	70	120
38	x	65	42	48	M 6	17	1.300	70	110
40	x	65	42	48	M 6	17	1.400	70	110
42	x	75	51	59	M 8	41	2.000	100	120
45	x	75	51	59	M 8	41	2.200	100	120
48	x	80	51	59	M 8	41	3.200	130	150
50	x	80	51	59	M 8	41	3.300	130	150
55	x	85	51	59	M 8	41	3.600	130	140
60	x	90	51	59	M 8	41	3.900	130	130
65	x	95	51	59	M 8	41	4.300	130	120
70	x	110	61	71	M 10	83	7.500	210	130
75	x	115	61	71	M 10	83	8.000	210	130
80	x	120	61	71	M 10	83	8.500	210	120
85	x	125	61	71	M 10	83	11.400	270	150
90	x	130	61	71	M 10	83	12.000	270	140
95	x	135	61	71	M 10	83	12.600	280	135
100	x	145	68	80	M 12	145	15.000	300	130
110	x	155	68	80	M 12	145	16.500	300	120
120	x	165	68	80	M 12	145	22.500	370	140
130	x	180	68	80	M 12	145	29.000	450	150
140	x	190	76	90	M 14	210	32.000	460	130
150	x	200	76	90	M 14	210	41.000	550	150
160	x	210	76	90	M 14	210	44.000	550	140
170	x	225	76	90	M 14	210	54.500	640	160
180	x	235	76	90	M 14	210	57.500	640	150

**Recommended shaft/hub fitting tolerances h8/H8**